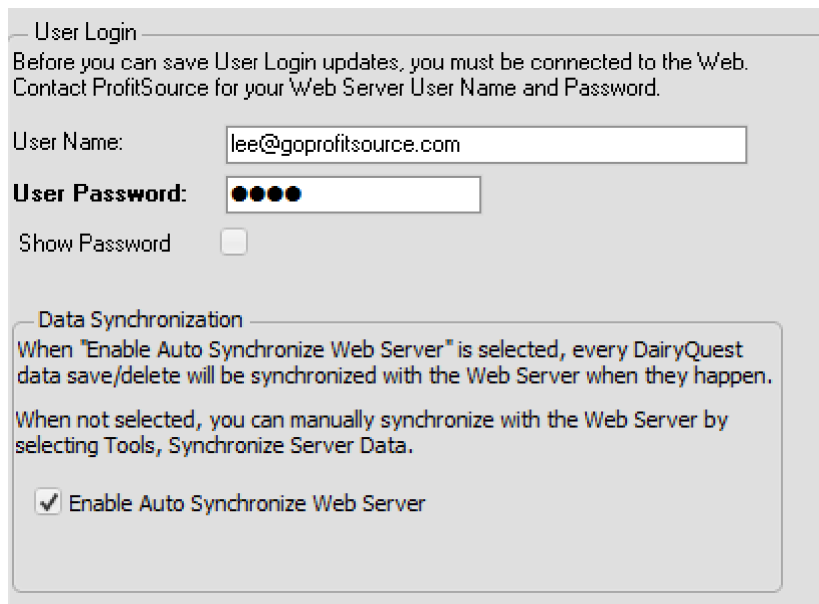


## Instructions for Enabling DairyQuest Web

In DairyQuest click Preferences|Web Server.

Enter your User Name and Password. Your User Name will be your email address registered with us. Your password will be emailed to you. If you need to change your password, please contact us at 888-597-2977.



The screenshot shows a window titled "User Login" with the following content:

Before you can save User Login updates, you must be connected to the Web. Contact ProfitSource for your Web Server User Name and Password.

User Name:

User Password:

Show Password

**Data Synchronization**

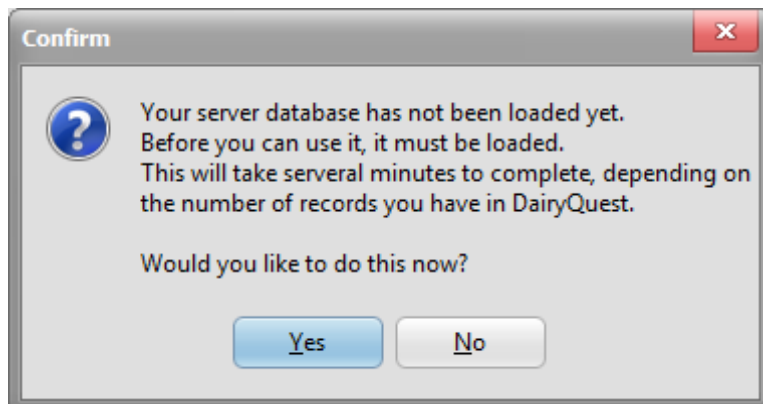
When "Enable Auto Synchronize Web Server" is selected, every DairyQuest data save/delete will be synchronized with the Web Server when they happen.

When not selected, you can manually synchronize with the Web Server by selecting Tools, Synchronize Server Data.

Enable Auto Synchronize Web Server

If you select Enable Auto Synchronize Web Server, each time you save events in DairyQuest, the new events will be moved to our web server. This will work fine in most situations. If this interrupts your recording of data, uncheck this and then do a manual synchronization.

Click Save. The following screen will appear:



I suggest that you click Yes. It will create your database and then upload your data.

A manual synchronization is done by going to Tools|Synchronize Server Data and click the Manual Synchronize button. This will take all of your data in DairyQuest and copy it to our web server. With a good Internet connection this process only takes a few minutes.

If someone records an event on the web date and you have auto-sync enabled the desktop version of DairyQuest will receive that data when you save a record in DairyQuest.

## Instructions for Viewing DairyQuest On The Web

To Login on our web server you will need to use the following link. You will need to login each time you want to look at your animals. Most smartphones and tablets have the ability to remember you login credentials.

<http://www.goprofitsource.com/login/>

## Login to DairyQuest

<b>User Name</b>	<input type="text"/>
<b>User Password</b>	<input type="password"/>
	<input type="button" value="Login"/>

You will use the same User ID and Password that you entered into DairyQuest.


You should be able to create an Icon on your smart phone/tablet/pc for the login URL. You can Google how to create an icon for your smart phone or tablet. It should tell you how to do it. By creating an Icon on your smart phone/tablet you will not have to type the URL each time you want to login.

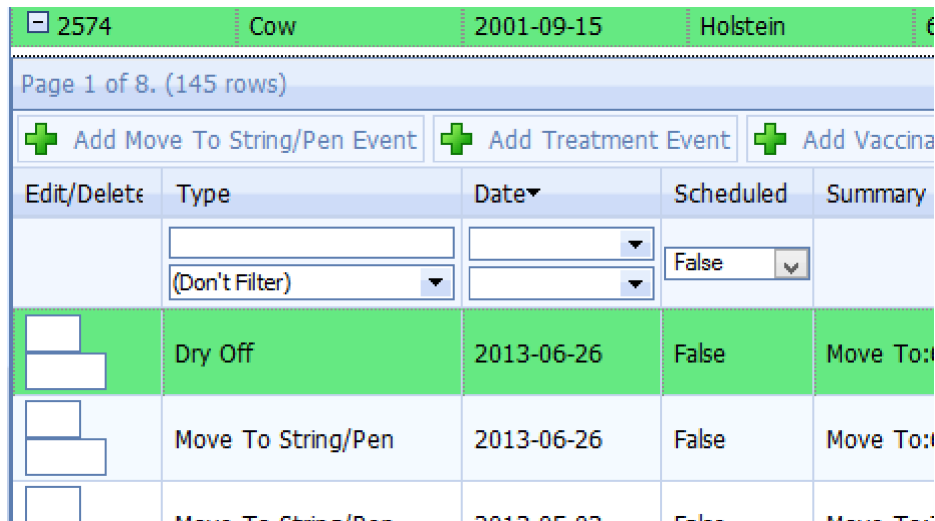
In the event that you need to change your password, please contact us and we will change it for you.

Page 1 of 29. (574 rows)

ID▲	Kind	Birth Date	Breed	String/Pen
<input type="text"/>	<input type="text" value="Cow"/>	<input type="text"/>	<input type="text"/>	<input type="text"/>
(Don't Filter) ▼	Equals ▼	<input type="text"/>	(Don't Filter) ▼	(Don't Filter) ▼
+ 2369	Cow	2000-09-11	Holstein	2
+ 2574	Cow	2001-09-15	Holstein	6 - Dry Cows
+ 2868	Cow	2003-06-01	Holstein	7
+ 2871	Cow	2003-06-06	Holstein	3
+ 2967	Cow	2003-11-29	Holstein	4
+ 2975	Cow	2003-12-16	Holstein	6 - Dry Cows

You will see that you can filter the grid by each column header. I have this example filtered by Kind (Cow). You can sort the grid by clicking on a column header.

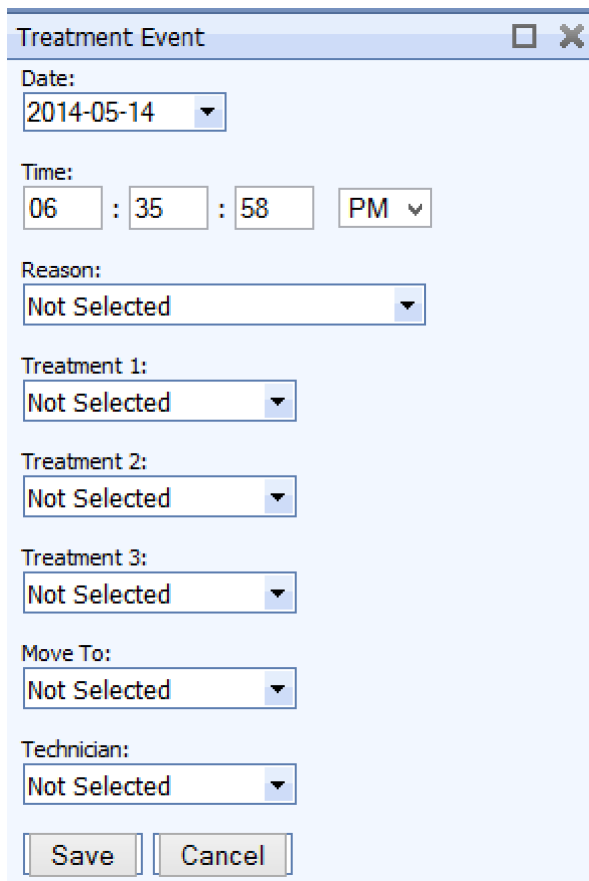
To see the events on an animal, click on the 



Edit/Delete	Type	Date	Scheduled	Summary
	(Don't Filter)		False	
	Dry Off	2013-06-26	False	Move To:
	Move To String/Pen	2013-06-26	False	Move To:
	Move To String/Pen	2013-06-26	False	Move To:

I have this example filtered by Scheduled = false. So I am only seeing recorded events.

To add an event, click Add Move to String/Pen, Add Treatment Event or Add Vaccination Event:



Treatment Event

Date: 2014-05-14

Time: 06 : 35 : 58 PM

Reason: Not Selected

Treatment 1: Not Selected

Treatment 2: Not Selected

Treatment 3: Not Selected

Move To: Not Selected

Technician: Not Selected

Save Cancel

Here I am showing a treatment event. You cannot add new labels on web application. All labels must be entered in DairyQuest.

When you save an event you will see this:

Edit/Delete	Type	Date▼	Scheduled	Summary
	<input type="text"/> (Don't Filter) ▼	<input type="text"/> ▼ <input type="text"/> ▼	False ▼	
<input type="button" value="Edit"/> <input type="button" value="Delete"/>	Treatment	2014-05-14	False	Reason:Abce

You can edit or delete the event if it has not yet been synched to DairyQuest. It will be synched in DairyQuest if someone is at the DairyQuest computer and has done one of the following:

1. Saved an event.
2. Did a manual sync or uploaded all data.

The grid is very powerful and should allow you to view/filter animals in many ways.

Please feel free to provide us with your feedback.

lee@goprofitsource.com  
888-597-2977